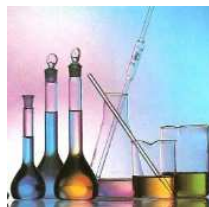
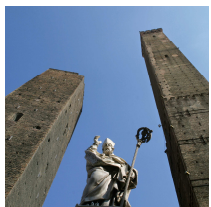


# LABORATORIO A.G.E.R.

## Borsa Merci Bologna

### *A.G.E.R. ANALYTICAL LABORATORY*

IL LABORATORIO ITALIANO PER L'ANALISI DEI CEREALI, ALIMENTI E MANGIMI  
THE ITALIAN LABORATORY FOR THE ANALYSIS OF GRAIN, FOOD AND FEED



**AGER**  
(Associazione Granaria Emiliana Romagna)  
**BORSA MERCI BOLOGNA**  
LABORATORIO ANALISI

#### LABORATORIO A.G.E.R. Borsa Merci Bologna

Piazza Costituzione, 8  
40128 BOLOGNA

Tel: +39 051 519051

Fax: +39 051 501043

@: Informazioni: [info@agerborsamerici.it](mailto:info@agerborsamerici.it)

Lab: [laboratorio@agerborsamerici.it](mailto:laboratorio@agerborsamerici.it)

Segreteria: [segreteria@agerborsamerici.it](mailto:segreteria@agerborsamerici.it)

Amministrazione:

[amministrazione@agerborsamerici.it](mailto:amministrazione@agerborsamerici.it)

Web: [www.agerborsamerici.it](http://www.agerborsamerici.it)

#### QUALITY SYSTEM

certified by:



accredited by:



Lab n.: 0499

Approved GAFTA Analyst:



## PRODOTTI ANALIZZATI (WE CARRY OUT TESTS ON):

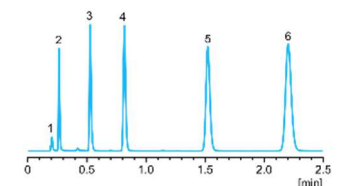
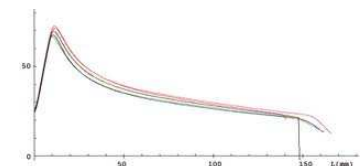
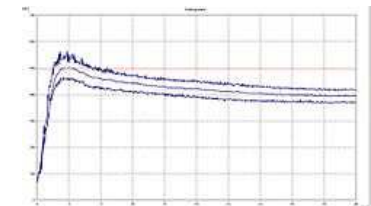
Cereali	(Cereals, grains and pulses)
Semi oleosi	(Oil seeds)
Farine e semole	(Wheat flour and semolina)
Pasta e prodotti da forno	(Pasta and bakery)
Mangimi	(Animal feeds)
Foraggi	(Forages)



## ANALISI E PROVE (SPECIFIC TESTS):

All the tests are performed according to standard methods (EU, ISO, UNI, AFNOR...)

Chimica	(Chemical analysis)
Microbiologia	(Microbiology)
Reologia	(Dough tests)
Contaminanti (HPLC/GC)	(Undesirable substances)
OGM (PCR Real Time)	(GMO – maize and soya events)
Difetti e impurità	(Physical analysis)
Microscopia	(Microscopy)



*Per ogni richiesta di analisi contattateci.*

*Please contact the Lab with your requirements.*